



St. Elizabeth Catholic Charities

Providing Help. Creating Hope. Serving All.

2016-2017 Annual Report: Fiscal Year July 1, 2016 – June 30, 2017

Steps to *Success*



*Start by doing what's necessary;
then do what's possible;
and suddenly you are
doing the impossible.*

– St. Francis of Assisi

Continuing to Meet the Needs of Our Community

Dear Friends,

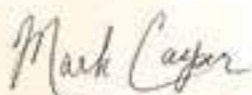
The past year has been filled with challenges and exciting changes for St. Elizabeth Catholic Charities. We have forged ahead, keeping our mission in focus and working to provide help and create hope for individuals in need throughout our community.

Perhaps the year's most impactful piece of news was that after two decades, our Transitional Shelter would no longer receive funding from the Department of Housing and Urban Development (HUD). In fact, due to shifting priorities, all transitional shelters in the area lost HUD funding. The move came as no surprise, as we had seen a gradual decrease over the past four years, but the complete elimination of \$105,000 in annual funding all at once presented an immediate challenge.

Between November of 2013 and the end of the 2016-17 fiscal year, St. Elizabeth Catholic Charities has had to replace a total of over \$316,000 in HUD monies. While many transitional shelters in the area closed their doors, we were able to sustain by reducing costs, restructuring our programs and adding revenue from events and grants. Several of our most loyal supporters also stepped up financially to help save our shelters during this critical time.

We thank you for your continued support which enables us to walk alongside individuals and families in their time of need. Rest assured, with each step we take as an agency, we are guided by a commitment to practice excellent stewardship and a devotion to provide quality care and services to those in need. With your support, we continue to move forward – providing more help, creating more hope and serving more women, children and families than ever before.

In step together,



Mark Casper
Agency Director



Our Mission

To affirm the dignity of and respect for all human life by assisting individuals and families in need to achieve empowerment and self-sufficiency.

We are happy to report that **95.8 cents of every dollar** donated to St. Elizabeth Catholic Charities goes directly to serve families in need.

Serving All

We thank you for your continued support which enables us to walk alongside individuals and families in their time of need. From July 1, 2016 – June 30, 2017, St. Elizabeth Catholic Charities served over 1,453 families, including 1,814 children and babies.

52 Adoptive families
home studies



53 pregnant women
and **21** newborns
were housed in the Women
& Children's Emergency
Shelter (WCES) – formerly
known as the Maternity Home



47 expectant parents
served and
12 children placed
through Adoption Bridges
of Kentuckiana

20 mothers and **20** children were housed in the Family Stability Program – formerly known as the Transitional Shelter



15.8% increase
in the number of families
served through our Marie's Community
Distribution Program



63.2% increase
in the number of children served
in our CASA program

16 adult consumers were provided with
16,857 hours of direct support
through the Supported Living Program (SLP)

92.6% of shelter residents moved out
to permanent housing

95.8¢ of every \$ donated
to St. Elizabeth Catholic Charities
goes directly to serve families
in need.



693 & **226**

families were served by
Marie's Community
Distribution Center

were new families
receiving services
for the FIRST TIME

255 children were served by **75** volunteers through CASA programs in Floyd & Washington Counties

With your support, we continue
to move forward – providing
more help, creating more hope and
serving more women, children and
families than ever before.

468
school counseling sessions
with children in
2 area
schools



Steps Toward Self-Sufficiency

St. Elizabeth Catholic Charities' Residential Programs provide women with a safe environment to live, get back on their feet and connect to community resources that can benefit them and their children. With \$105,000 in annual HUD funding for our Transitional Shelter Program going away, it created major challenges to the survival of the shelter programs, but it also created new opportunities. Moving away from HUD funding also meant moving away from their guidelines. We were able to make positive adjustments to our shelters to be more cost effective and better serve the needs of homeless women and children in our community.

St. Elizabeth's Residential Maternity and Transitional Shelter Programs evolved into the Women and Children's Emergency Shelter (WCES) and the Family Stability Program (FSP). We maintained a wing as our Maternity Home where expectant mothers receive support and guidance to prepare them to deliver a healthy baby and meet the challenges of parenting. By adapting to our WCES model, we are able to provide short-term shelter for single mothers and their children in addition to serving the maternity needs of women. WCES residents receive intensive case management focused on stabilizing any crisis, obtaining employment and securing stable housing. They are also able to benefit from on-site mental health counseling and therapeutic groups with a goal of ensuring the physical and emotional health of each mother and child. We stress education, life and parenting skills, independence, improving self-esteem and learning to make better choices.

In the Family Stability Program, we offer a private room and bath where residents and their small children can stay while continuing to work toward educational and career goals, learning parenting and life skills and working to eliminate barriers that prevent stable housing in the future.

As they say, every cloud has a silver lining. These changes have allowed us to serve more women and children than we were able to under HUD guidelines.



Archbishop visit – Former Archbishop Tobin visited St. Elizabeth Catholic Charities on September 28, 2016



Fun at the Annual Adoption Picnic

Stepping Out on Her Own

Val is a consumer with our Supported Living Program, which offers help to individuals with developmental delays. Her sister moved to Florida and it had been nearly five years since they had seen each other. Val always wanted to go to Florida but lacked the resources and understanding on how to make it happen. When she shared with Stephanie, her Direct Support Professional, that she would love to go see her family, Stephanie helped her develop a budget and plan the trip around Val's needs.



Luckily, Stephanie saw a story about new affordable flights being offered out of Louisville. Val was able to get a round trip flight for only \$189!

The airline was also very accommodating to Val's needs, arranging for a wheelchair, allowing Stephanie to wait with her until boarding and for her sister to meet her just as soon as she got off the plane.

This was not only Val's first flight, but also her first independent vacation. She loved seeing palm trees and walking on sandy beaches in addition to spending quality time with her niece and sister. Val came home with seashells, a sailboat wall hanging and many treasured memories, thanks to SLP.



Street level view of Holy Trinity Heritage Park

A *Step* Toward Completion

In May 2017, ground was broken on Holy Trinity Heritage Park. The park not only creates a usable green space for the community to enjoy, it also honors and preserves the history of New Albany's first Catholic church which was built in 1852 and destroyed by fire on December 29, 1975. Upon completion, the park will include a water feature, art pieces, benches, handicapped accessibility and several treasured elements of the original church such as the iconic bronze bells, stained glass panels and capstones.

The construction of Holy Trinity Heritage Park also represents the final step toward completion of St. Elizabeth's seven-phase strategic plan. Started in 2011, the plan included turning the former Holy Trinity Rectory into agency offices, expanding the shelters, completing affordable supportive housing units and building a distribution center.



Fr. Sonny Day - Reverse Raffle Winner



Marie's Community Distribution Day with St. Mary's of the Knobs Volunteers



Ribbon Cutting- Adoption Bridges of Kentuckiana relocated from downtown Louisville to the St. Matthews area in January of 2017



2017 Spirit of Hope Winners Jeanne Schmidt and Kathy Krueger (center) Presenters Stephanie Warren (left) and Phil McCauley (right)

Non-Profit of the Year

One Southern Indiana (1si) selected St. Elizabeth Catholic Charities as recipient of the 2016 Non-Profit of the Year Award. Nominees were evaluated by a panel of judges based on several criteria including organizational history, mission, challenges encountered over the past three years and recent successes.



Stepping Up for Children in Need

Court Appointed Special Advocates (CASA) are volunteers who receive specialized training and become the voice in court for abused and neglected children of Floyd and Washington Counties. The program has seen a trend of couples stepping forward to volunteer their time together. Bob and Pam Spiller, Lynda and Paul Grunzinger and Brenda and Gli Castueras are among the dynamic duos that have made this commitment.

"I like to assign the couples to work with children as a team, particularly in cases where sibling groups have been exposed to domestic violence situations," shared CASA Program Director Debbie Mefford. "They provide a great model of what a healthy relationship looks like, which unfortunately, many of these children have never had."



Lynda and Paul Grunzinger



Bob and Pam Spiller



Brenda and Gli Castueras

Performance Quality Improvement Report

In the fall of 2016, St. Elizabeth Catholic Charities completed our first four years of COA accreditation. This meant we were due for our second on-site agency audit. We are excited to report we passed with no findings. As always, the preparation for the audit and the time spent with the three auditors for several days was a great opportunity to learn and improve our processes driving even more continuous improvement. We are also happy to report that the Council leadership, management team and staff are all committed to improving our quality systems and client satisfaction.

Our agency continues to implement our current strategic plan and is more than halfway to full implementation. All staff is responsible for and involved in obtaining our desired quality goals. These metrics are reported to all staff, Council and stakeholders. Our

Performance Quality Improvement (PQI) Committee consists of staff leadership and community stakeholders to oversee this process and report results directly to our Council.

The staff has identified key quantitative and qualitative metrics and meets with the Committee each quarter to analyze the results. For all the metrics, action plans have been developed to drive improvements. All client qualitative comments received are reviewed by PQI team members. Significant progress has been made with metrics that the team will be creating new metrics for numerous programs in the coming year that address our most current opportunities for improvement. We are excited to report to our stakeholders that our quality improvement process is part of the agency's culture!

Stewardship - Financial Reports

ST. ELIZABETH-CATHOLIC CHARITIES

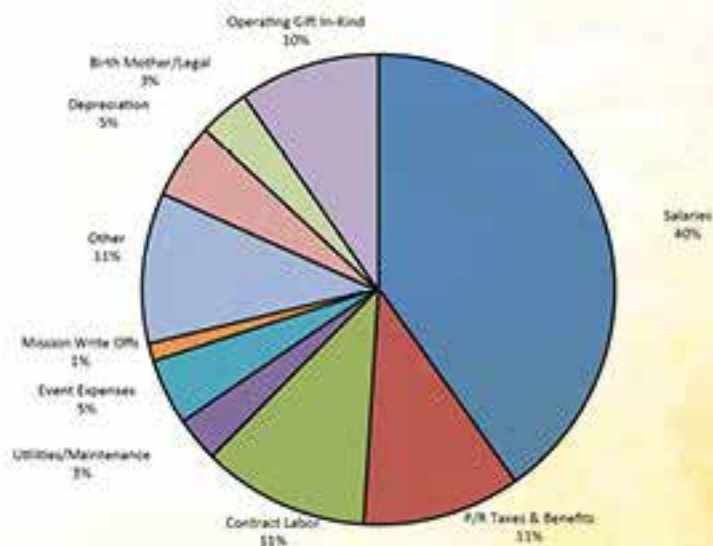
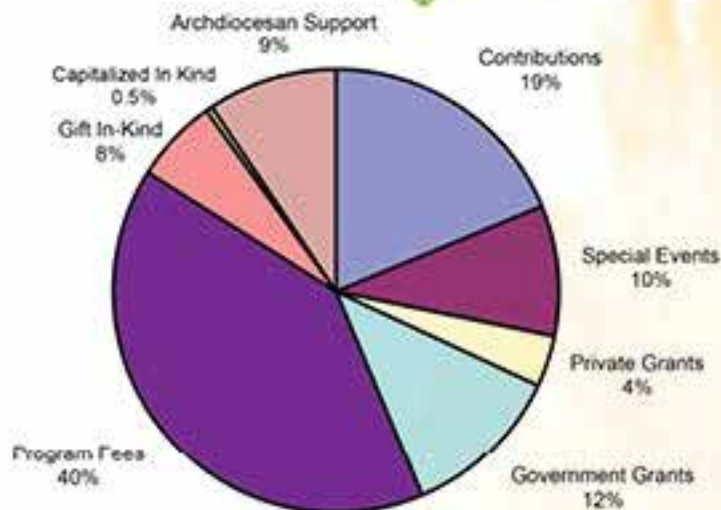
Operating Funds Only
Fiscal Year Ended 6/30/17

Revenues

Contributions	367,990	18.7%
Special Events	186,885	9.5%
Private Grants	73,129	3.7%
Government Grants	230,384	11.7%
Program Fees	792,198	40.3%
Archdiocesan Support	119,926	6.1%
Capitalized Gift In-Kind	9,711	0.5%
Operating Gift In-Kind	184,751	9.4%
Total Revenue	1,964,974	100.0%

Expenses

Salaries	771,849	40.2%
P/R Taxes & Benefits	207,662	10.8%
Contract Labor	219,386	11.4%
Utilities/Maintenance	58,967	3.1%
Event Expenses	86,995	4.5%
Mission Write Offs	23,260	1.2%
Other	201,662	10.5%
Depreciation	99,617	5.2%
Birth Mother/Legal	66,487	3.5%
Operating Gift In-Kind	184,751	9.6%
Total Expense	1,920,636	100.0%
Net Profit (Loss)	44,338	



95.8 cents of every donor dollar goes directly to client services.

We serve any person in need of our services, regardless of their religious, social or economic backgrounds.

A copy of the 2017 Audited Financial Statement for the Chancery and Certain Entities for the Archdiocese of Indianapolis is available at www.archindy.org/finance/archdiocese.html.

Integrity: Agency Council

Amy Burnette, President
Karen Schueler, Vice President
Alan Akin, Treasurer
Brenda Byrne, Secretary

Members

Tonja Aaron-Wells
Fran Brown
Emmett Exum
Brenda Falkenstein
Dr. Melissa Fry
Maria D. Granger
Tom Gettelfinger
Charlotte Ipsan
Ken Johnson
Camille Kalmey
Phil Kruer

Brian Lenfert
Staci Marshall
Leaha McCrite
Kortney Ryan
Andrew Takami
TexVery
Rich Vollmer
Derrick Wilson
Jennifer Yennes-Vizhnay
Dale Yost

Ex-officio

Fr. Eric Johnson, Our Lady of Perpetual Help
David Bethuram, Executive Director, Secretariat for
Catholic Charities

Leadership: Staff Members

Mark Casper, Agency Director
Jennifer McVeigh-Davis, Social Services Director
Dawn Bennett, Development Director
Karen Gutman, Controller
Cathy Reid, Administrative Services Director
Nicole Cardwell, Communications Specialist
Julie Barkley, Adoption Bridges of Kentuckiana Program Director

Tricia Byrd, Residential Director
Matthew Hudson, Supported Living Program Director
Debbie Melford, Court Appointed Special Advocates
Program Director
Erin Goodlett, Marie's Community Distribution Program Director
& Residential Case Manager
Renaë Stamper, Counseling Director



St. Elizabeth Catholic Charities

Providing Help. Creating Hope. Serving All.

702 E. Market Street • New Albany, IN 47150

Tel: 812-949-7305 • Fax: 812-941-7008

SteCharities.org