

2019-2020

Annual Report



St. Elizabeth Catholic Charities

Providing Help. Creating Hope. Serving All.

re·sil·ience

/rə'zilyəns/

the capacity to recover quickly from difficulties; toughness.



Dear Friends,

While the first part of the fiscal year beginning July 1, 2019 continued the celebration of St. Elizabeth's 40th anniversary of serving our community, the COVID-19 pandemic certainly became the headline of the last months. In this annual report, we would like to highlight the resilience demonstrated by our organization, our clients and our community during these unprecedented times.

Social distancing and safety guidelines changed the way most of our programs were able to operate. Our staff responded quickly and creatively to meet those challenges and to continue providing quality care and services. Let me share some examples:

- Our shelter remained open. Staff put in additional sanitation protocols, set up new use guidelines for common areas, and brainstormed ideas to keep residents busy during weeks of quarantine.
- Adoption Bridges of Kentuckiana implemented the use of technology and tablets to offer support for birth parents and provide critical services.
- Our Supported Living Program focused on helping clients understand and cope with the changes in the world around them while ensuring their basic needs were met.
- Marie's Community Distribution Program developed a curbside pickup system to more safely serve families in need.
- Our School Counselors offered support and guidance for students and parents facing the challenges of remote learning.

The generous support of our donors, community partners, local businesses and foundations helped keep our doors open and enable these good works and more, despite the fact that our largest annual fundraiser was unable to take place due to COVID. We are incredibly grateful for this support and more committed than ever to being excellent stewards of these funds, utilizing them to provide help, create hope and inspire resilience in those we serve as they face uncertainty.

Blessings,

Mark Casper
Agency Director





Heather's Story

Heather arrived at St. Elizabeth Catholic Charities following a difficult divorce. The split had taken an emotional toll and Heather doubted that she could make the transition from stay at home mom to earning a living to support herself and her four year old daughter. They had no place to live and everything felt so overwhelming.

While staying in the shelter, Heather soon took a retail job, but hours and benefits were limited. She continued to look for new opportunities with the help of her case manager. Medical training programs looked very interesting to her, but even with a paid program and plenty of encouragement, Heather was convinced she could never pass the tests. She took a job in manufacturing and was doing great progressing through St. Elizabeth's three tiers of housing programs, achieving goals, learning how to manage a budget and becoming more self-confident and self-sufficient.

Just as Heather was preparing to move out on her own, she was laid off from her job indefinitely due to COVID-19. She made a very brave decision to view this as an opportunity rather than a setback. Seeing all of the news about the pandemic and the important role of healthcare workers inspired Heather. A paid medical training program was still available and she began her journey to become a Certified Nursing Assistant. She passed her test, received a diploma, and will continue taking classes and learning on the job.

Heather is certainly a great example of resilience.



Volunteers Make a Difference!

St. Elizabeth is very fortunate to have many dedicated and hard-working volunteers. While COVID-19 may have taken away the opportunity for most volunteers to visit our campus in 2020, that did not stop them from continuing to make a positive impact in the lives of those we serve. From sewing face masks and dropping off cleaning supplies to having pizzas delivered and sending arts and craft projects to help keep residents productive and in good spirits during quarantine, our volunteers found so many thoughtful and creative ways to stay involved!



This year alone,
355 volunteers
devoted
3,753.75 hours
of service.

WLKY Bell Award Recipient

St. Elizabeth was honored to nominate Fran Brown and thrilled to learn that she was selected as a 2019 WLKY Bell Award Recipient. Fran has been involved in agency leadership, fundraising, and direct client service for many years. She has made a special impact by developing sewing and cooking classes for residents of our shelter as a way to spend time, listen and support women as they walk their journey toward empowerment and self-sufficiency.



2019-2020 Stats

395 women facing homelessness assisted

187
residents
total



83
women

104
children

Marie's Community Distribution Program



614
Families

136 receiving
1st time assistance
(22.15%)



St. Elizabeth Catholic Charities
Providing Help. Creating Hope. Serving All.

Adoption Bridges of Kentuckiana

378 professional adoption services conducted including:

69 adoption support groups



57 expectant mothers assisted

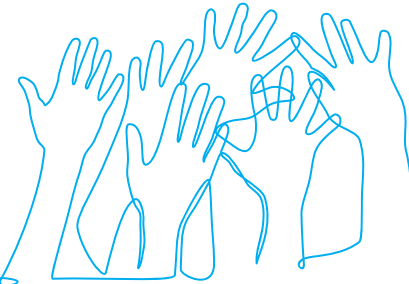


46 adoptive family home studies

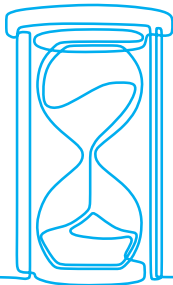


Supported Living Program

23 participants

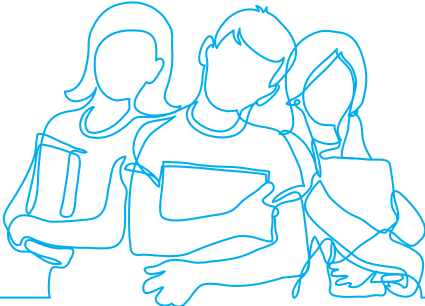


5,619 hours of service



School Counseling

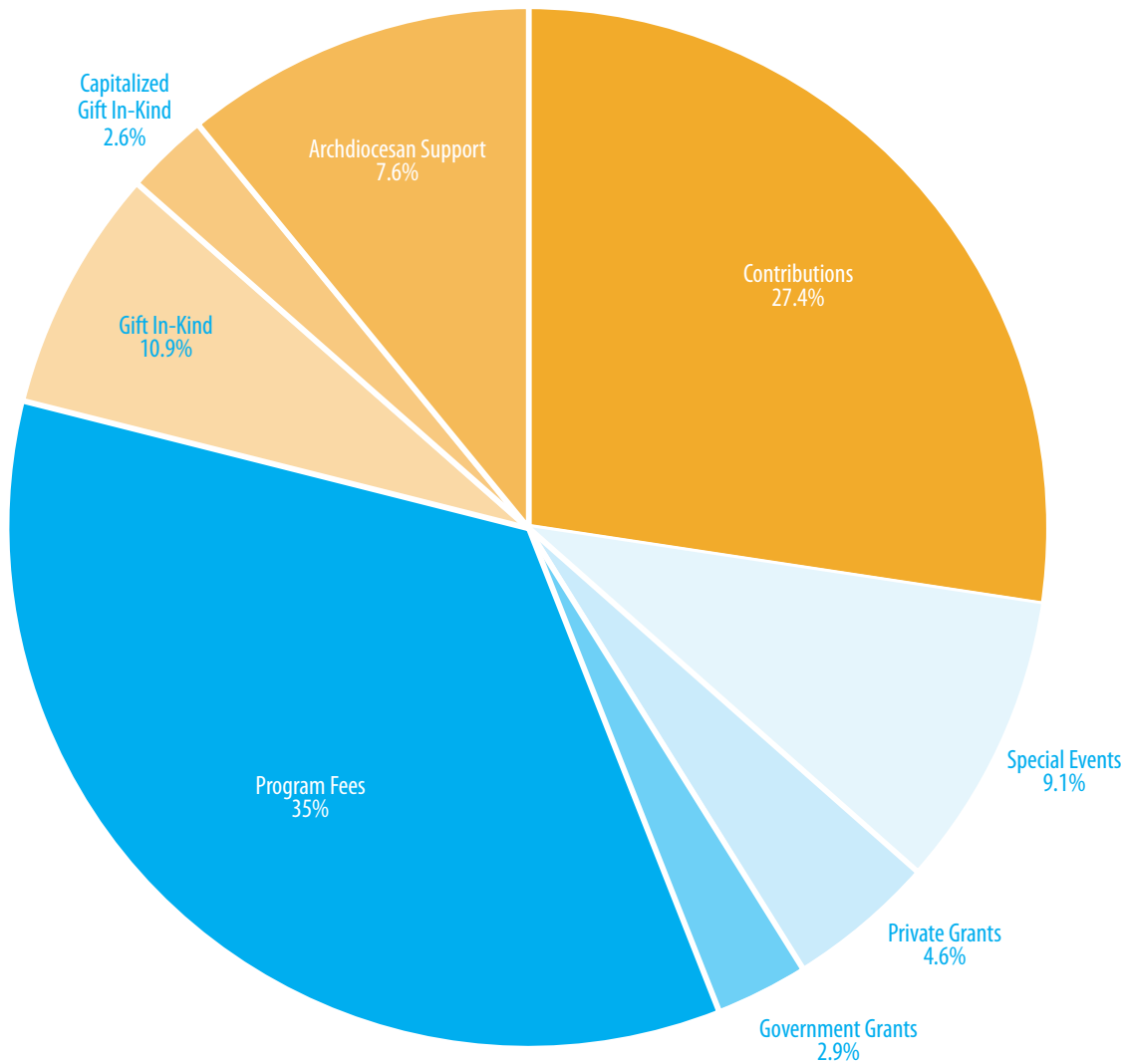
648 students



at 3 area schools received support to succeed



St. Elizabeth Catholic Charities • Financials



Revenues

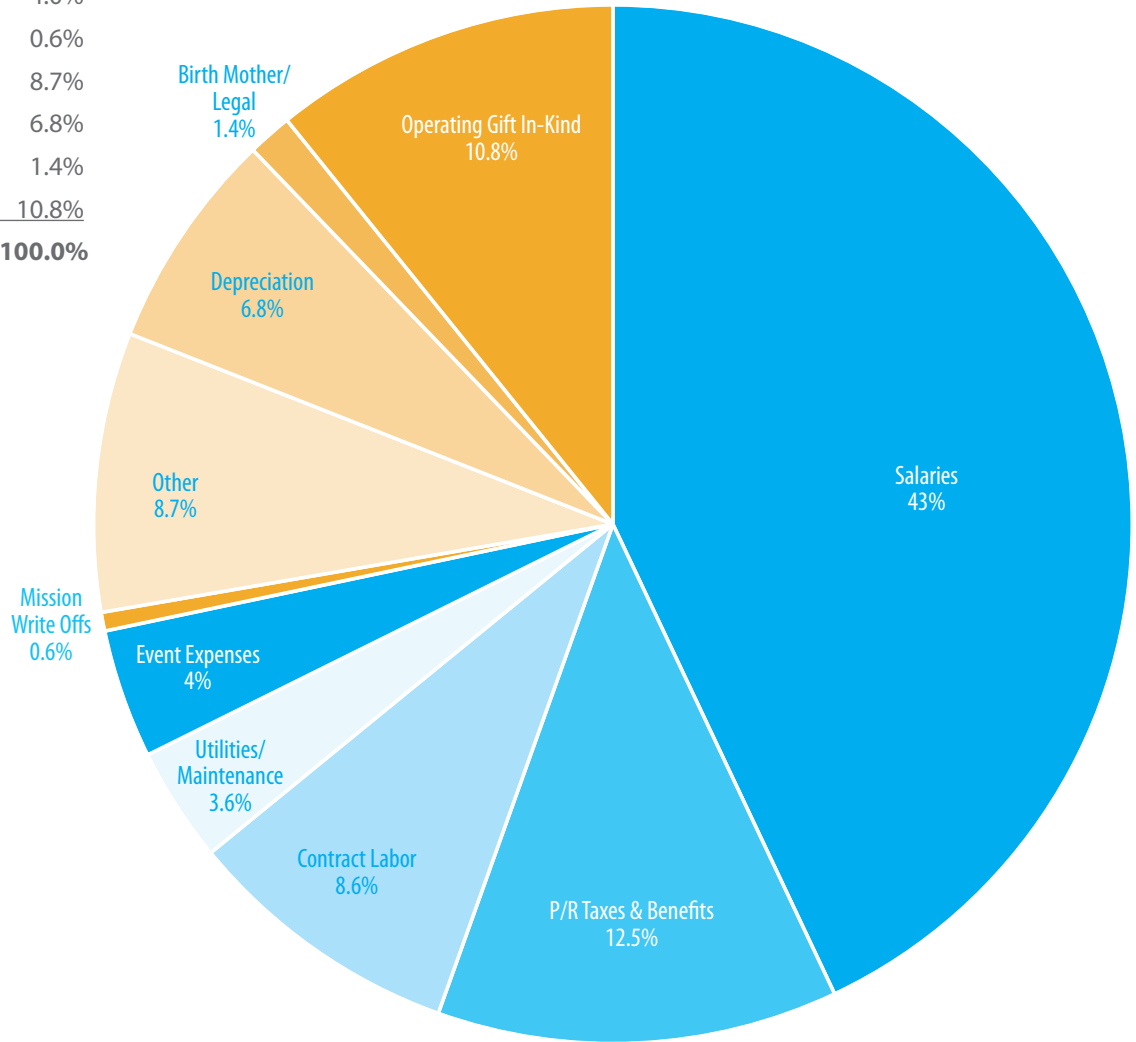
Contributions	433,303	27.4%
Special Events	144,656	9.1%
Private Grants	73,062	4.6%
Government Grants	45,699	2.9%
Program Fees	552,280	34.9%
Archdiocesan Support	119,708	7.6%
Capitalized Gift In-Kind	41,250	2.6%
Operating Gift In-Kind	172,513	10.9%
Total Revenue	1,582,471	100.0%



Operating Funds Only • Fiscal Year Ended 6/30/20

Expenses

Salaries	686,378	43.0%
P/R Taxes & Benefits	199,250	12.5%
Contract Labor	137,969	8.6%
Utilities/Maintenance	57,100	3.6%
Event Expenses	64,310	4.0%
Mission Write Offs	9,305	0.6%
Other	138,791	8.7%
Depreciation	109,070	6.8%
Birth Mother/Legal	22,171	1.4%
Operating Gift In-Kind	172,513	10.8%
Total Expense	1,596,857	100.0%
Net Profit (Loss)	(14,386)	

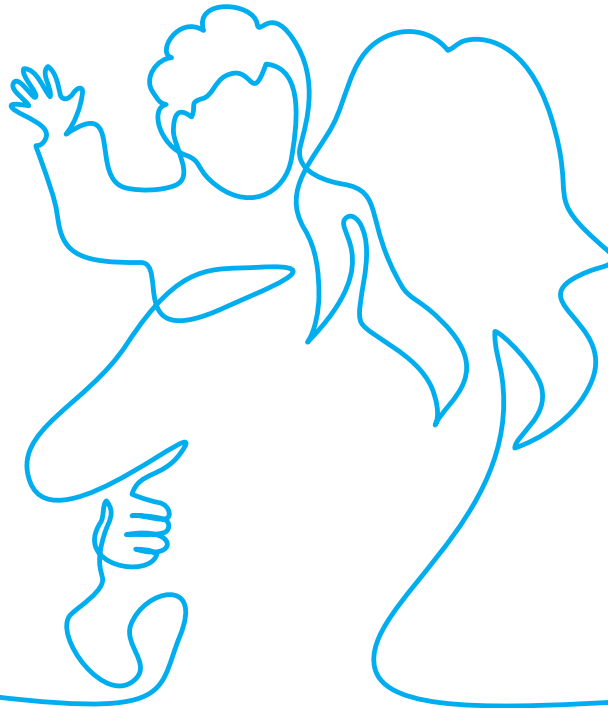


92.6 cents of every donor dollar goes directly to client services.

We serve any person in need of our services, regardless of their religious, social or economic backgrounds.

A copy of the 2020 Audited Financial Statement for the Chancery and Certain Entities for the Archdiocese of Indianapolis is available at www.archindy.org/finance/archdiocese.html.





Advisory Council

Karen Schueler, President	Kim Fancher	Leaha McCrite
Dale Yost, Vice President	Dr. Melissa Fry	Jennifer O'Neil
Alan Akin, Treasurer	Tom Gettelfinger	Amber Ruoff
Brenda Byrne, Secretary	Marcella Hawk	Betty Russo
Tonja Aaron-Wells	Joan Hurley	Kortney Ryan
Fran Brown	Charlotte Ipsan	Andrew Takami
Amy Burnette	Ken Johnson	Tex Very
Dr. Sharyn Cortés-Cabello	Camille Kalmey	Janine Wells
Anne Cristiani	Mike Killen	Derrick Wilson
Emmett Exum	Phil Kruer	Jennifer Yennes-Vizhnay
Brenda Falkenstein	Staci Marshall	

Ex-Officio

Fr. Joseph Feltz, Our Lady of Perpetual Help
David Bethuram, Executive Director, Secretariat for Catholic Charities

Staff

Mark Casper, Agency Director
Jennifer McVeigh-Davis, Social Services Director
Dawn Bennett, Development Director
Karen Gutman, Controller
Cathy Reid, Administrative Services Director
Nicole Cardwell, Communications Specialist
Julie Barkley, Adoption Bridges of Kentuckiana Program Director
Tricia Byrd, Residential Director
Emily Trinkle, Supported Living Program Director
Erin Goodlett, Marie's Community Distribution Program Director & Residential Case Manager

702 E. Market Street • New Albany, IN 47150
Tel: 812-949-7305 • Fax: 812-941-7008
SteCharities.org



St. Elizabeth Catholic Charities

Providing Help. Creating Hope. Serving All.