

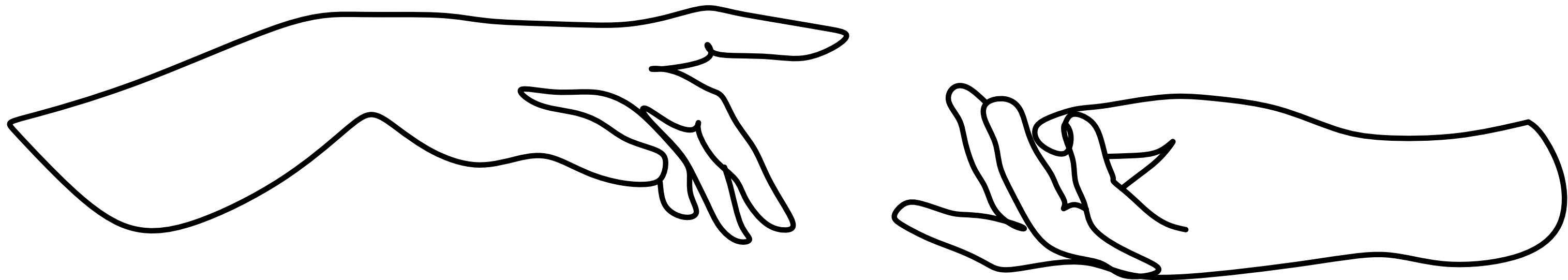
St. Elizabeth Catholic Charities

Providing Help. Creating Hope. Serving All.

2020-2021 ANNUAL REPORT

FISCAL YEAR JULY 1, 2020-JUNE 30, 2021

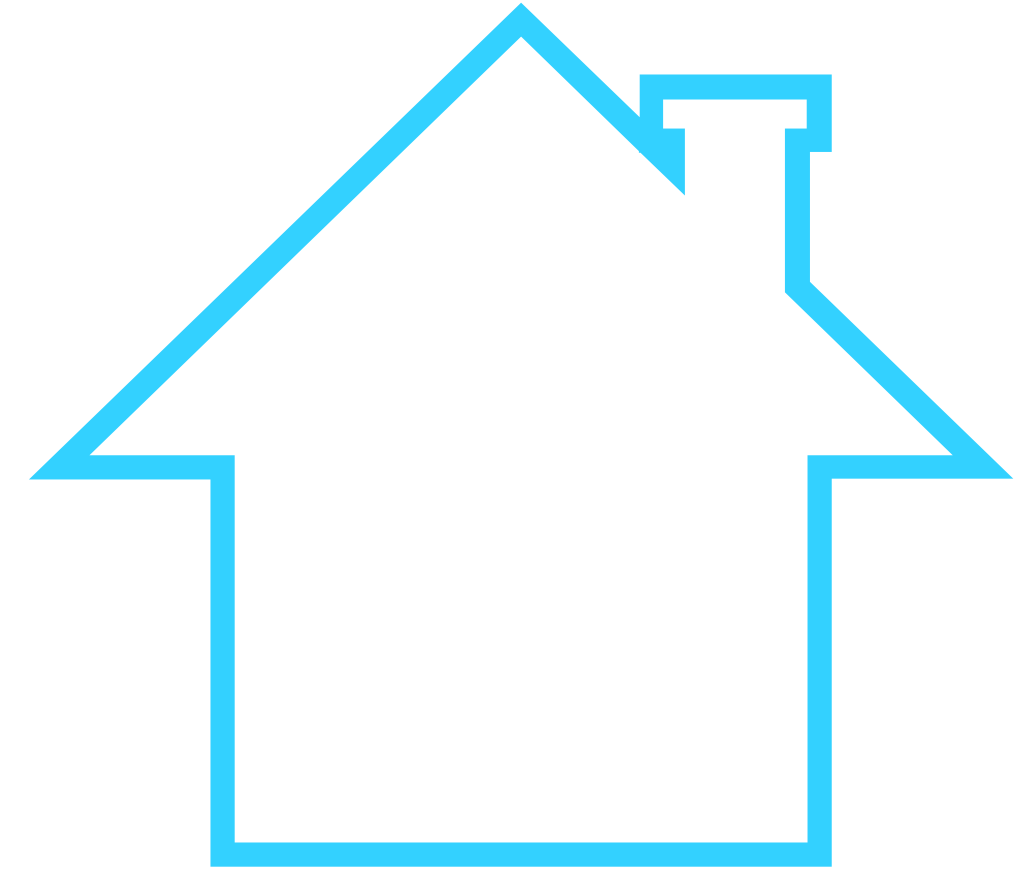
In another year that was anything but normal, St. Elizabeth Catholic Charities continued providing help, creating hope and serving our community in need. Despite many new challenges, with your support, here are some of our accomplishments by the numbers.



RESIDENTIAL PROGRAMS

160 total residents

3 housing programs



306 women facing homelessness assisted



**74 women and
86 children
found shelter &
support at**



St. Elizabeth
Catholic Charities

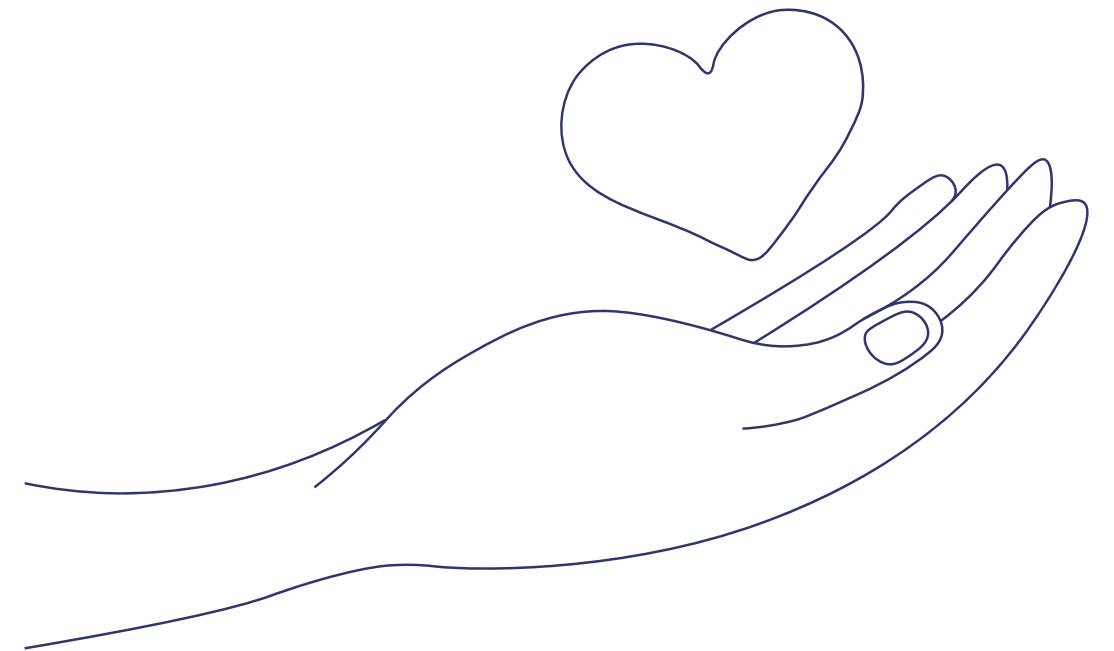


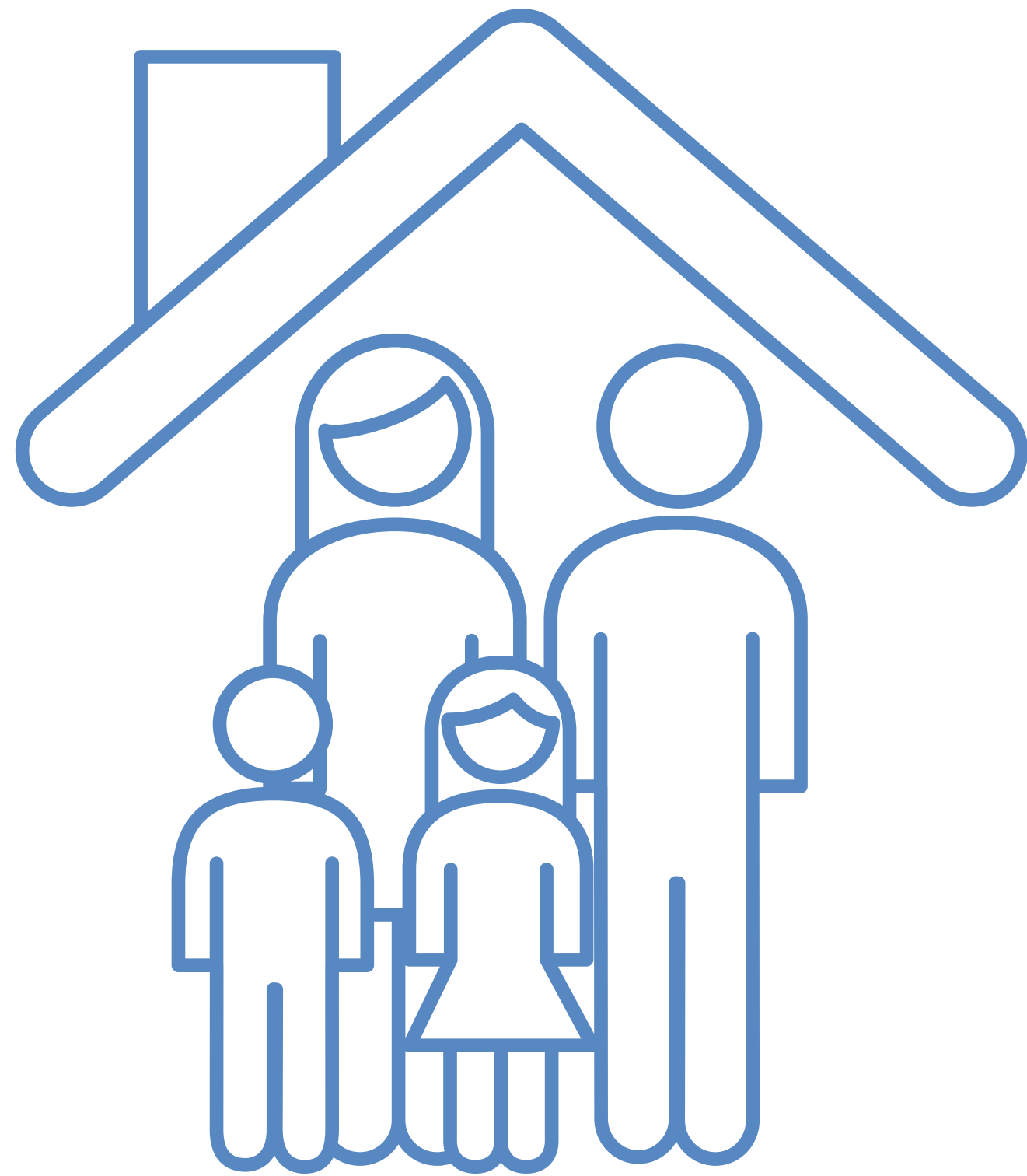
404 professional
adoption services
conducted including



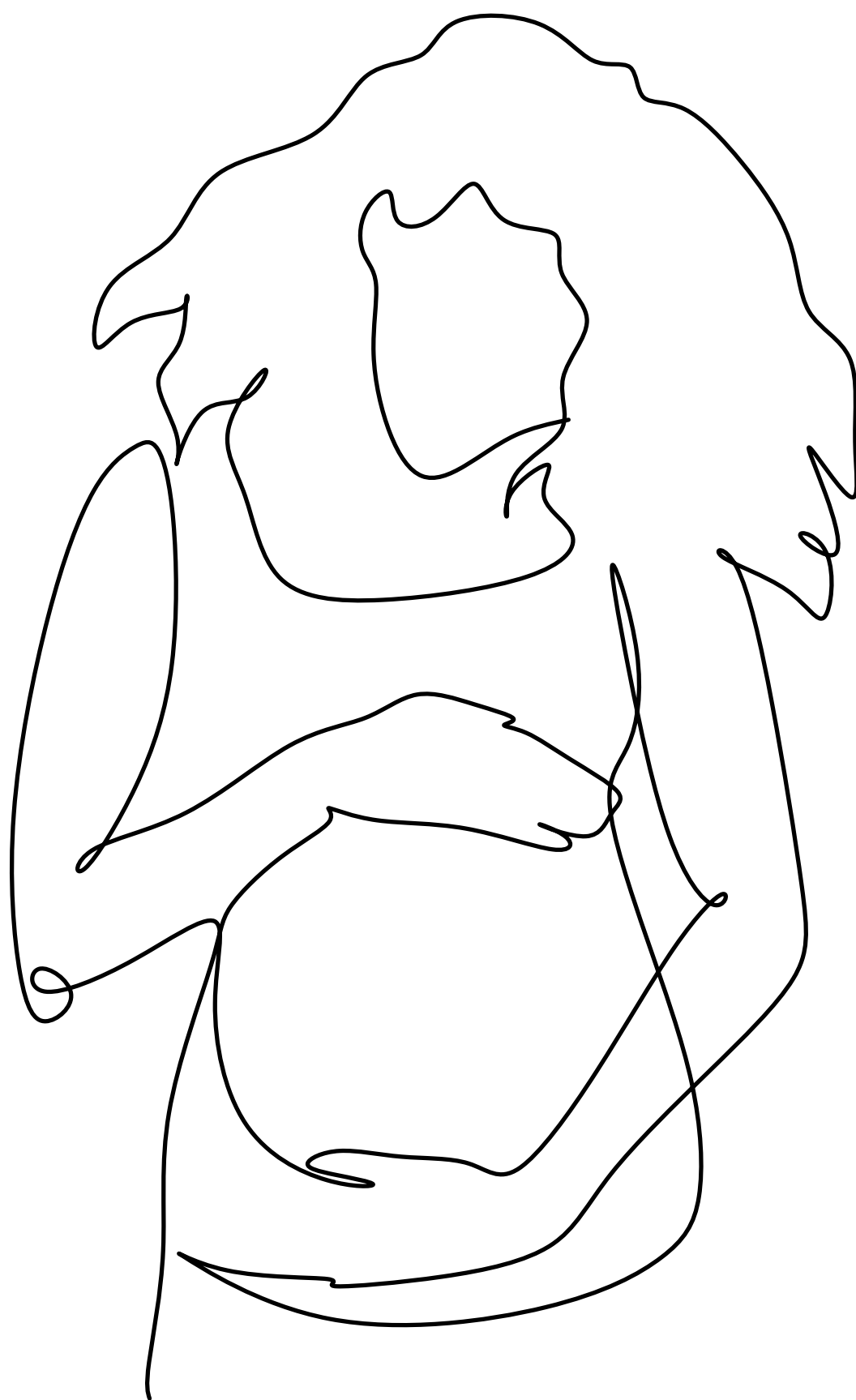


45 adoption support groups





55 adoptive family
home studies



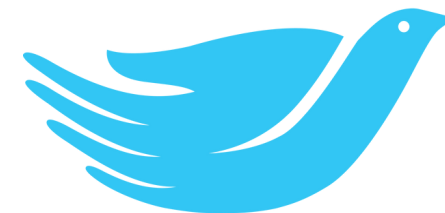
Information and
support for 44
expectant mothers



SCHOOL COUNSELING

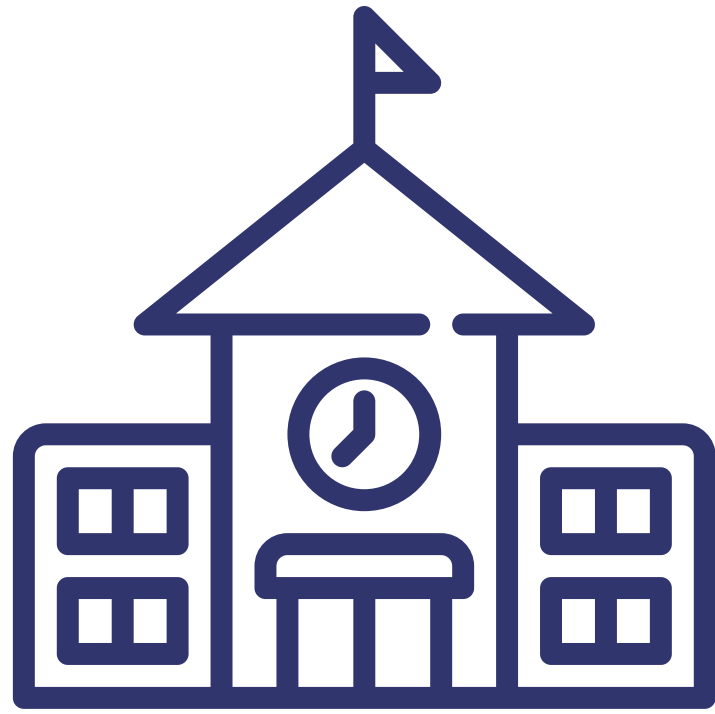


835 students

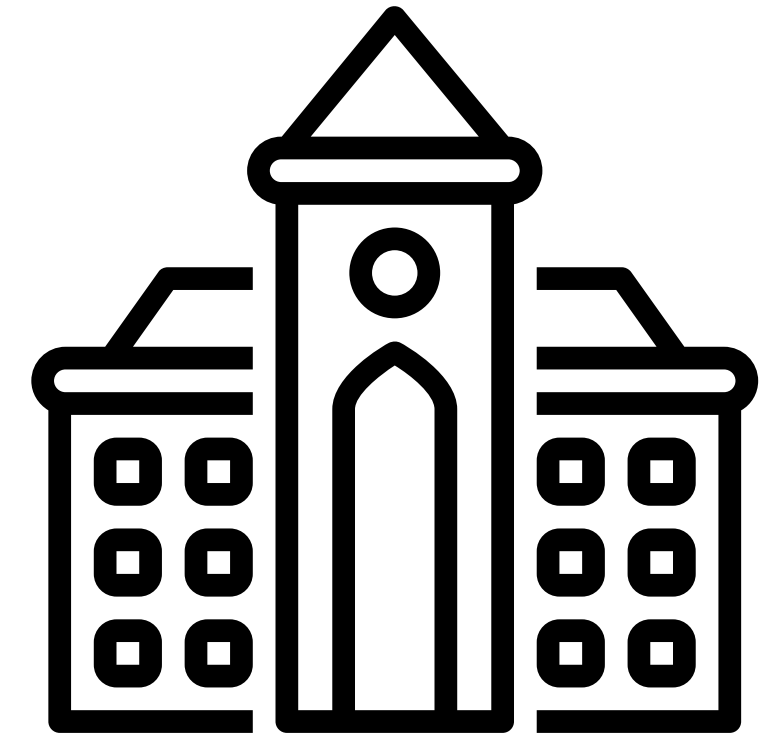


St. Elizabeth Catholic Charities

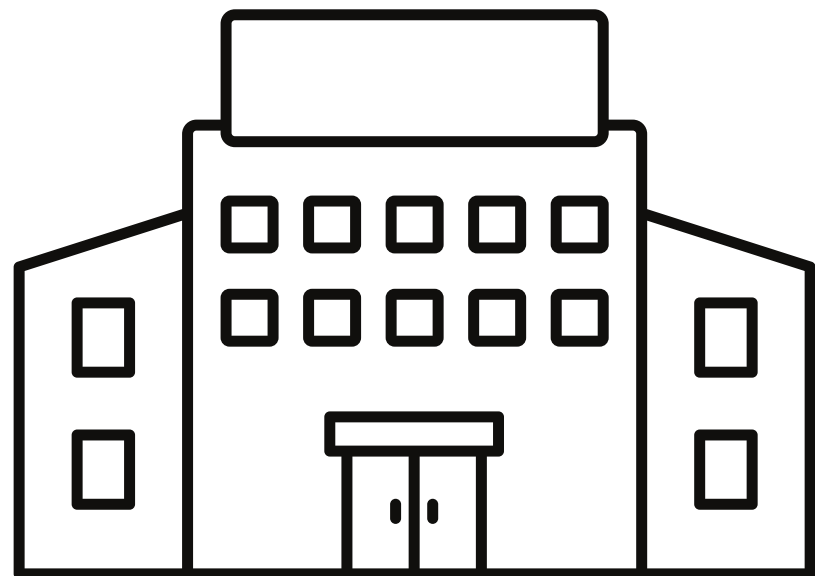
Providing Help. Creating Hope. Serving All.

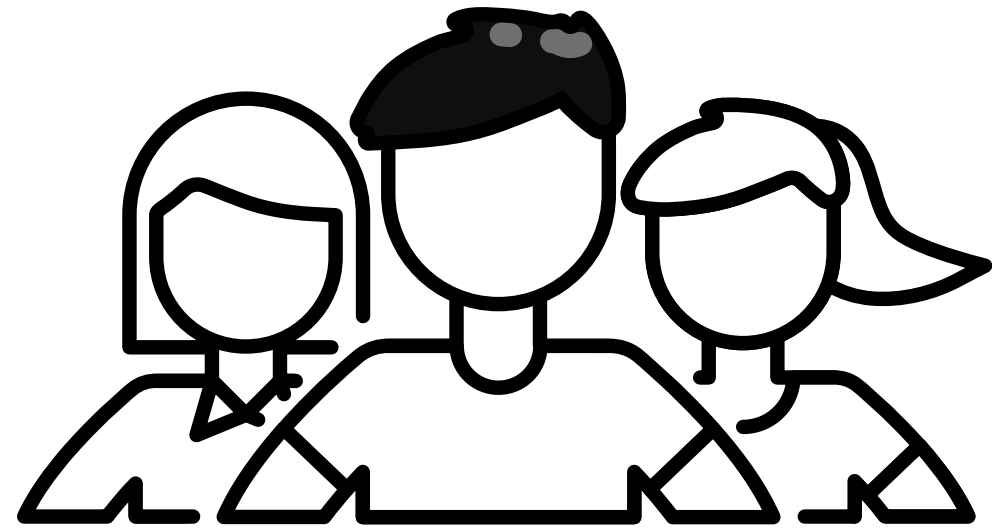


St. Elizabeth Catholic Charities
Providing Help. Creating Hope. Serving All.

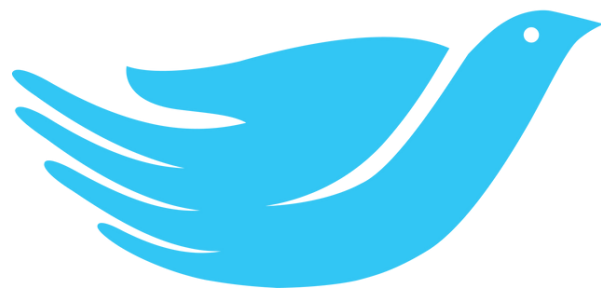


at 4 area schools





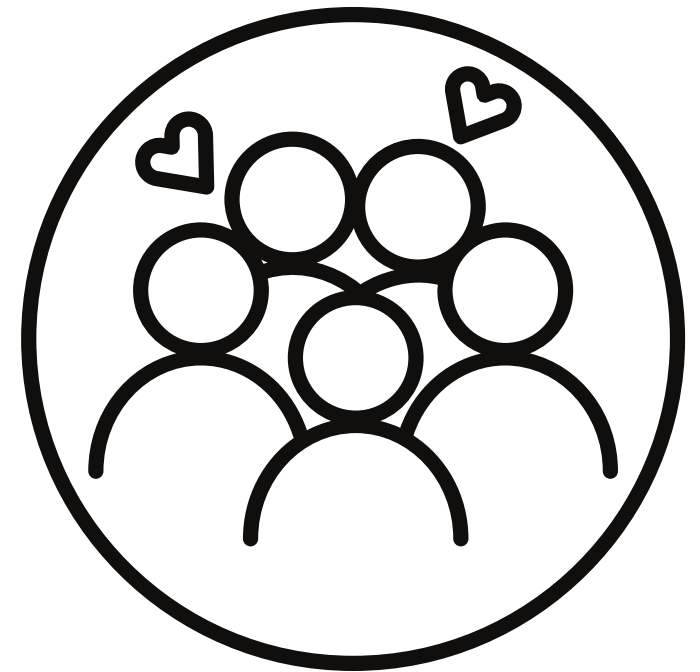
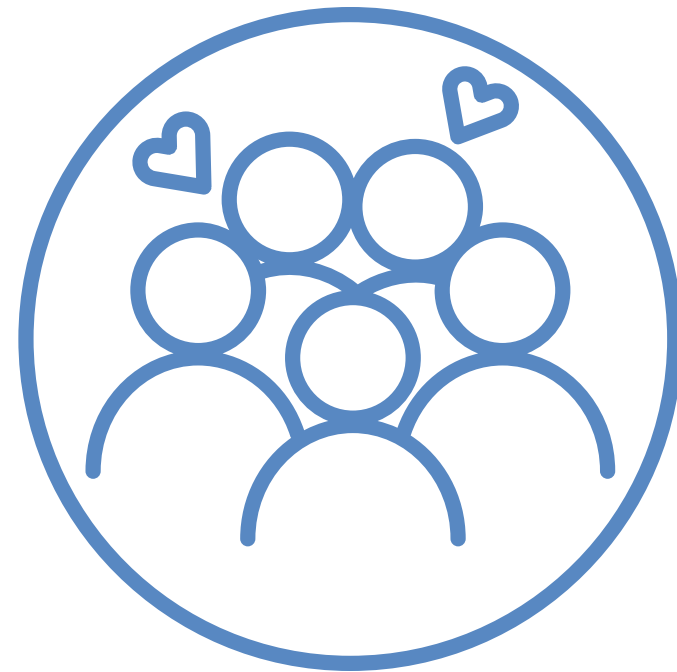
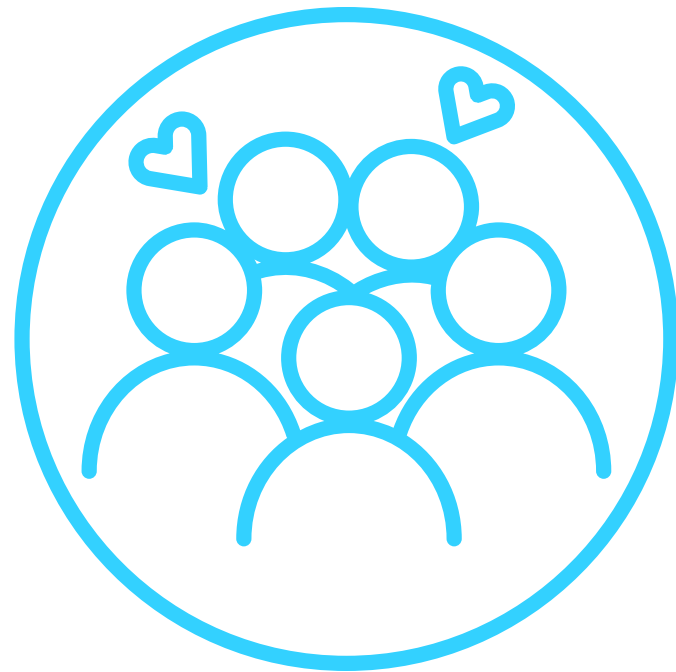
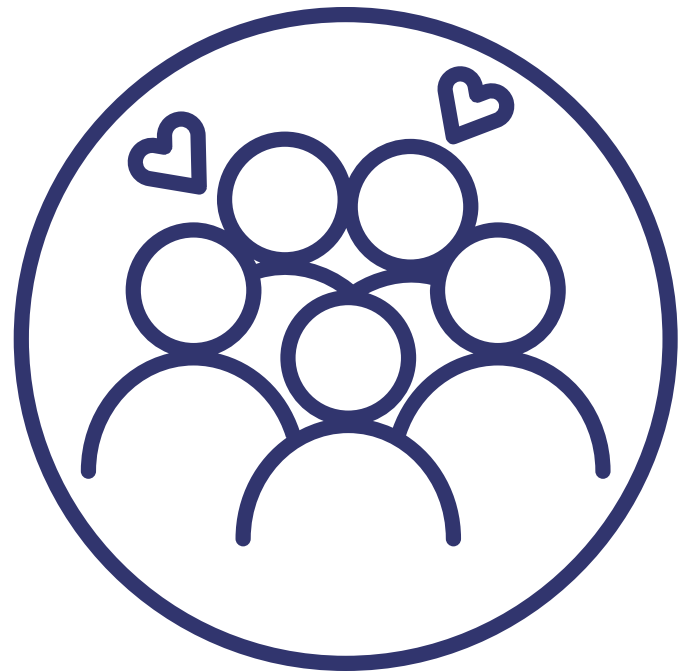
received emotional,
behavioral & academic
supports to help ensure
their well-being



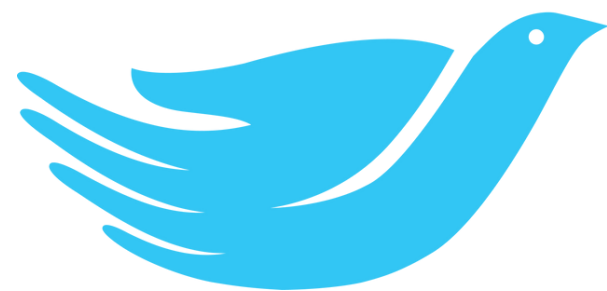
St. Elizabeth Catholic Charities

Providing Help. Creating Hope. Serving All.

SUPPORTED LIVING PROGRAM



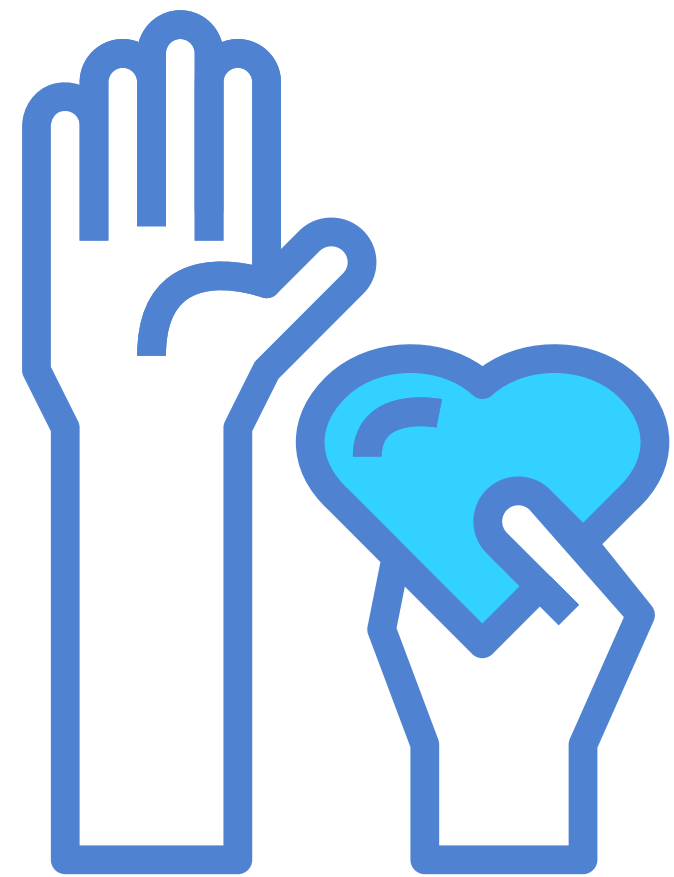
20 participants



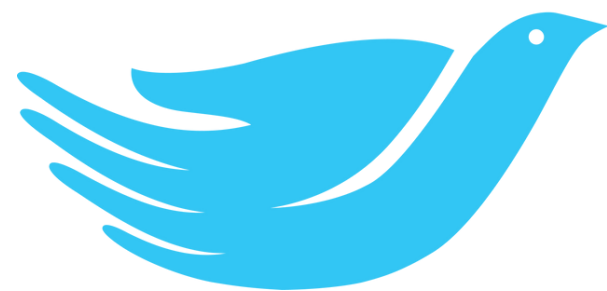
St. Elizabeth Catholic Charities

Providing Help. Creating Hope. Serving All.

SUPPORTED LIVING PROGRAM



5,993 hours of service devoted to help clients live with greater independence, foster personal interests & achieve their goals



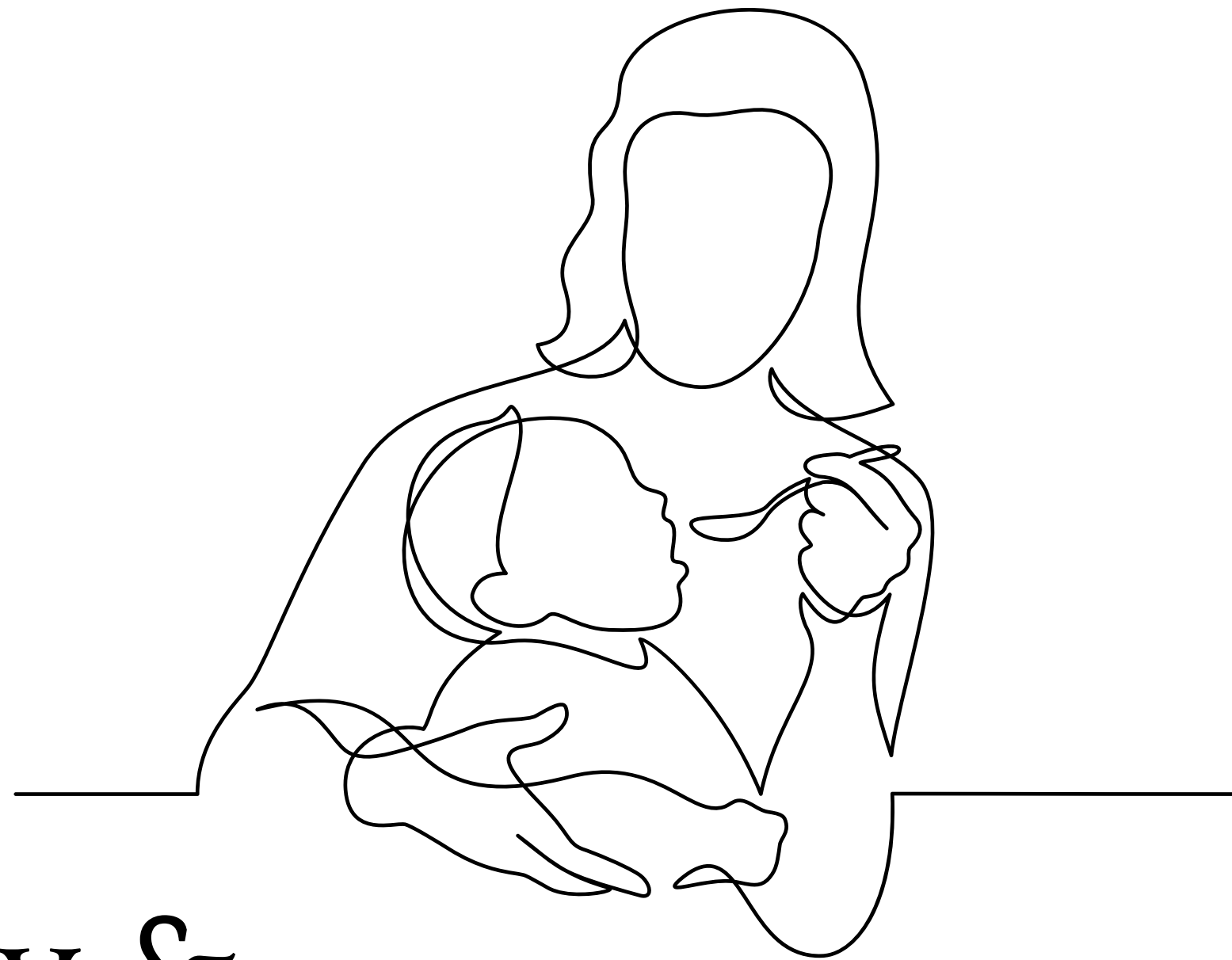
St. Elizabeth Catholic Charities

Providing Help. Creating Hope. Serving All.

Marie's

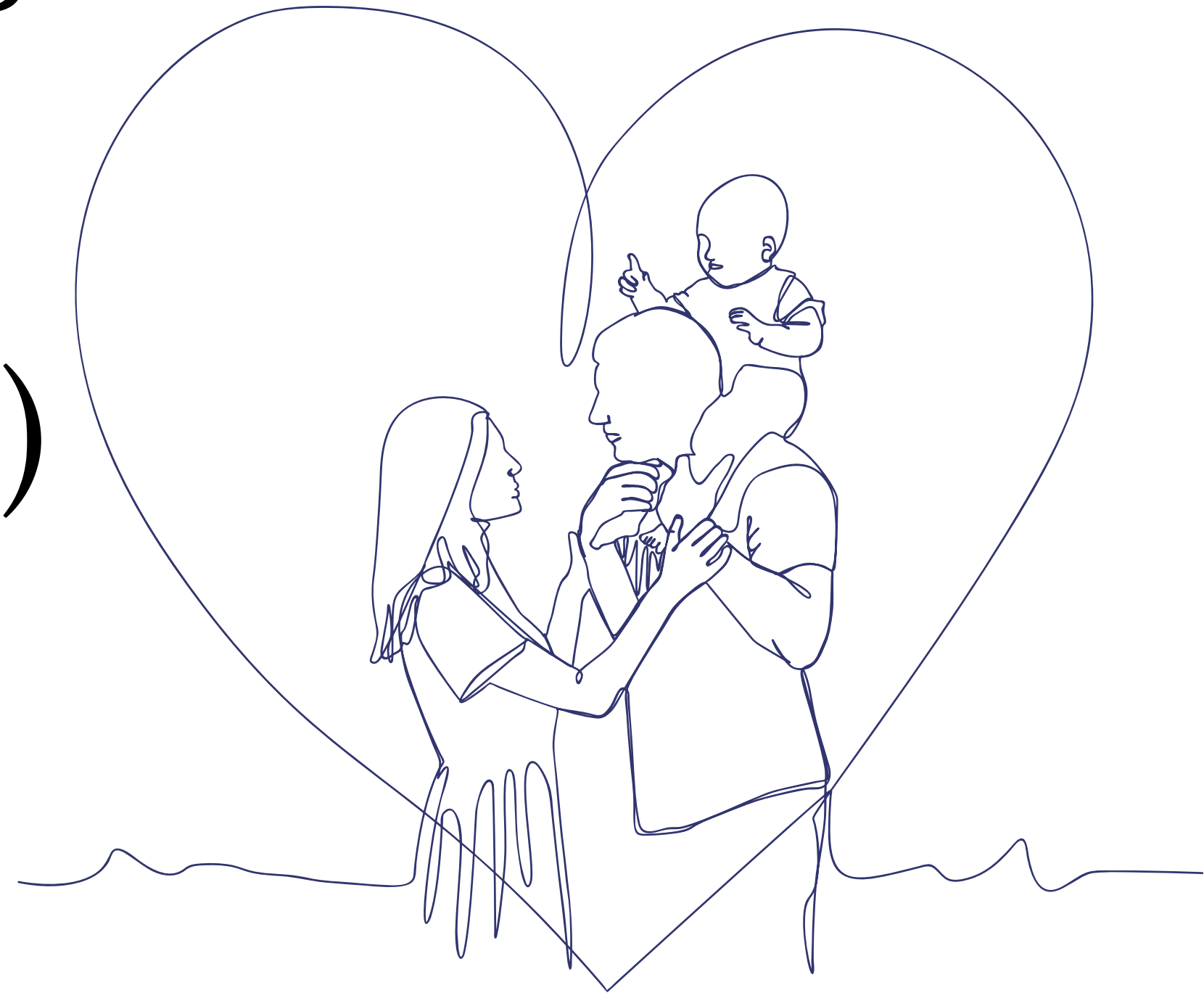
Community Distribution Program

450 families received
help in the form of
essential mother/baby &
household goods

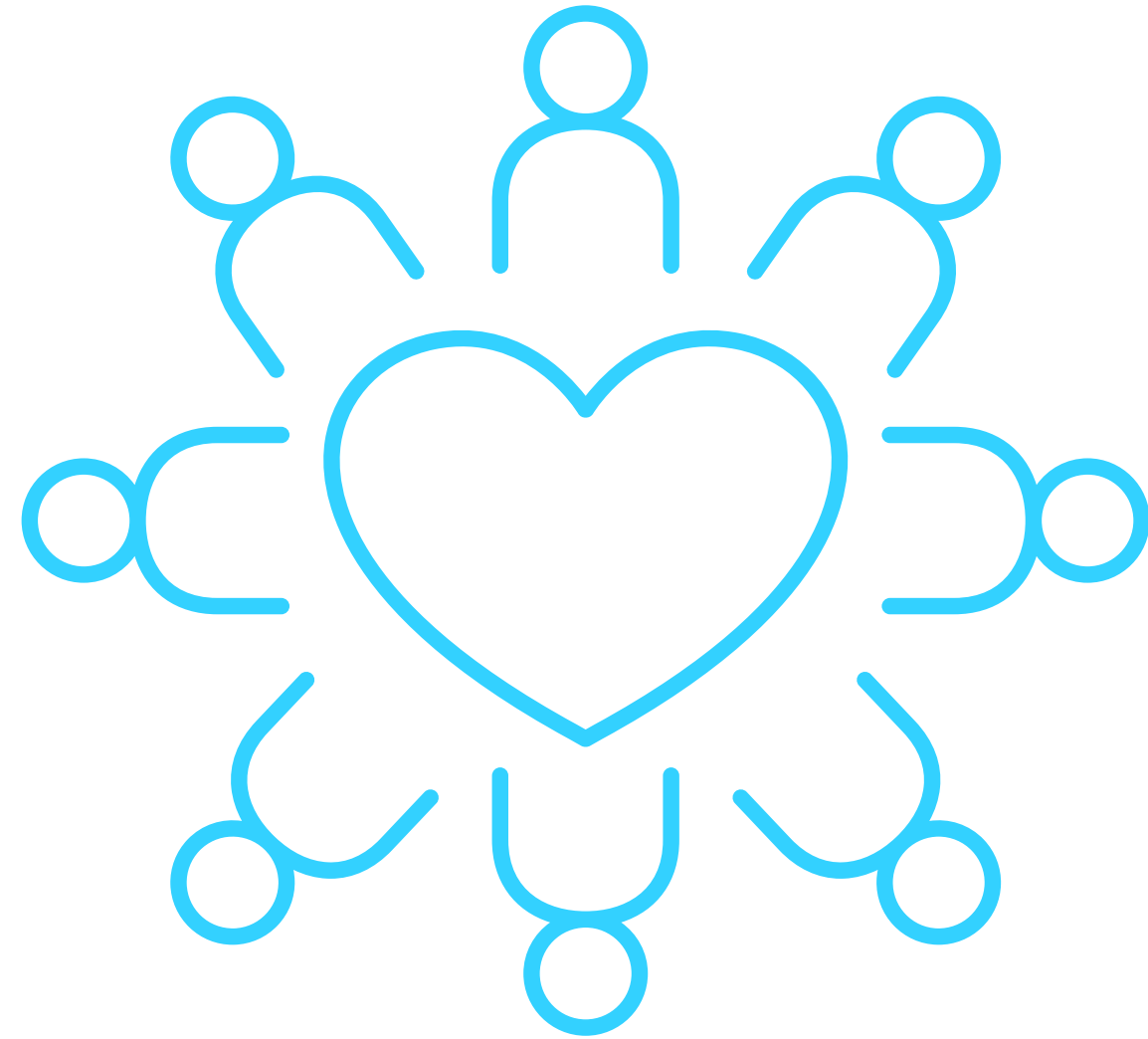


96 of those families
visited Marie's for
the 1st time (21.33%)

Marie's
Community Distribution Program



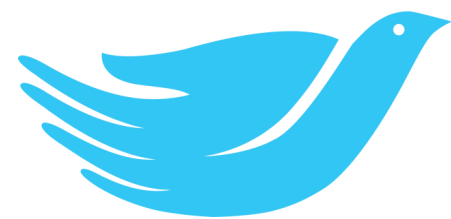
VOLUNTEERS HELP MAKE IT ALL POSSIBLE!



Last year, 238 volunteers



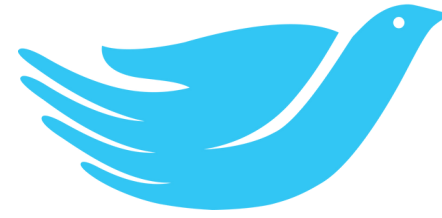
devoted over 3,202
hours of service



St. Elizabeth Catholic Charities

Providing Help. Creating Hope. Serving All.

RESPECT



St. Elizabeth Catholic Charities

Providing Help. Creating Hope. Serving All.

We respect the dignity of all people, because we believe human life is sacred and each person has inherent dignity. Respect for others is the basis for a community.

St. Elizabeth Catholic Charities offers its services without discrimination with regard to race, religion, color, creed, social-economic level, gender, sexual orientation, age or handicapping conditions.

STEWARDSHIP

92.6 cents of every donor dollar goes directly to client services.



Thank you to our generous donors! We are committed to making the best possible use of the gifts you entrust to us!



St. Elizabeth Catholic Charities

Providing Help. Creating Hope. Serving All.

FINANCIALS

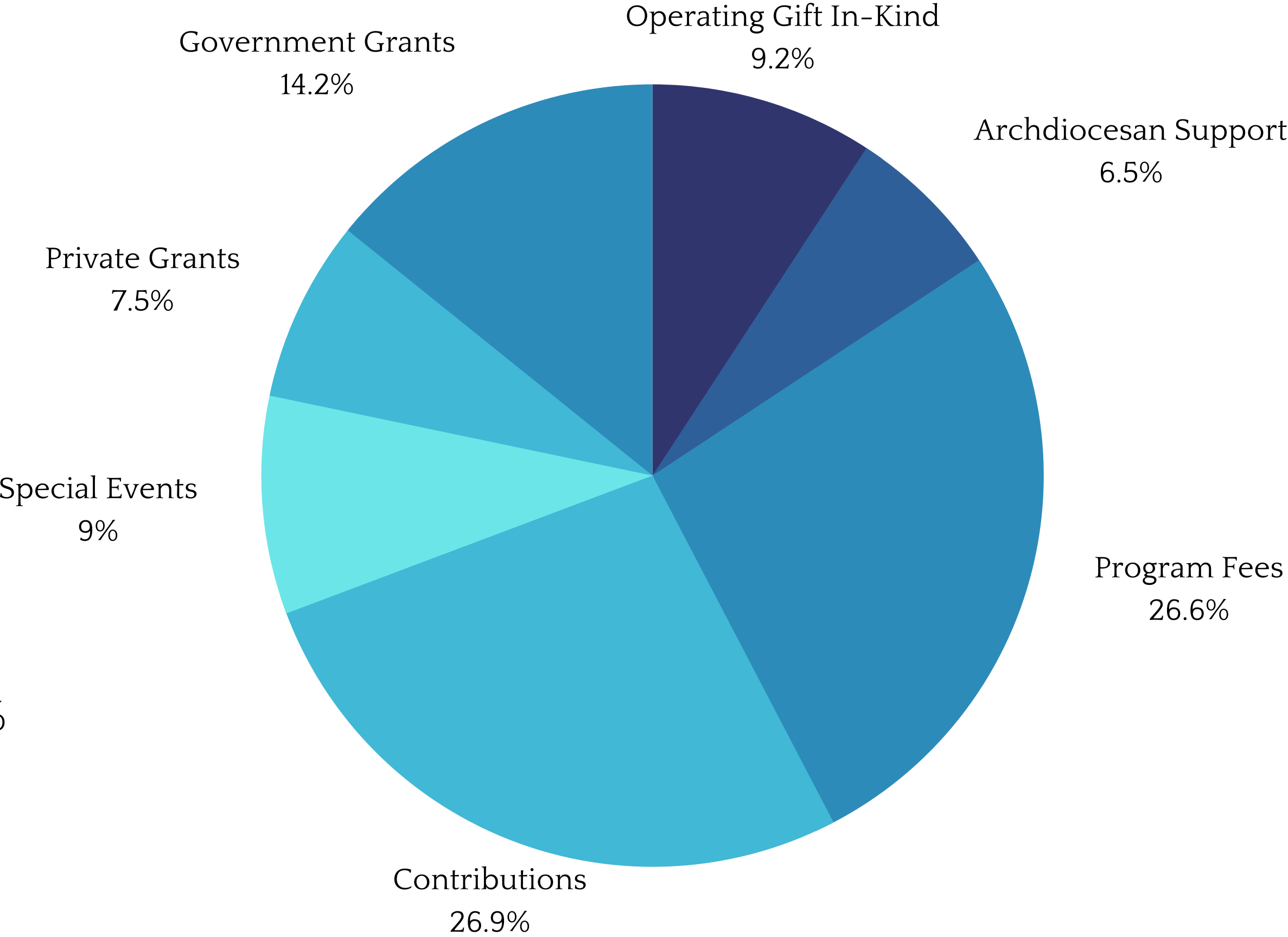
Fiscal year ended 6/30/2021



A copy of the 2021 Audited Financial Statement for the Chancery and Certain Entities for the Archdiocese of Indianapolis is available at www.archindy.org/finance/archdiocese.html.

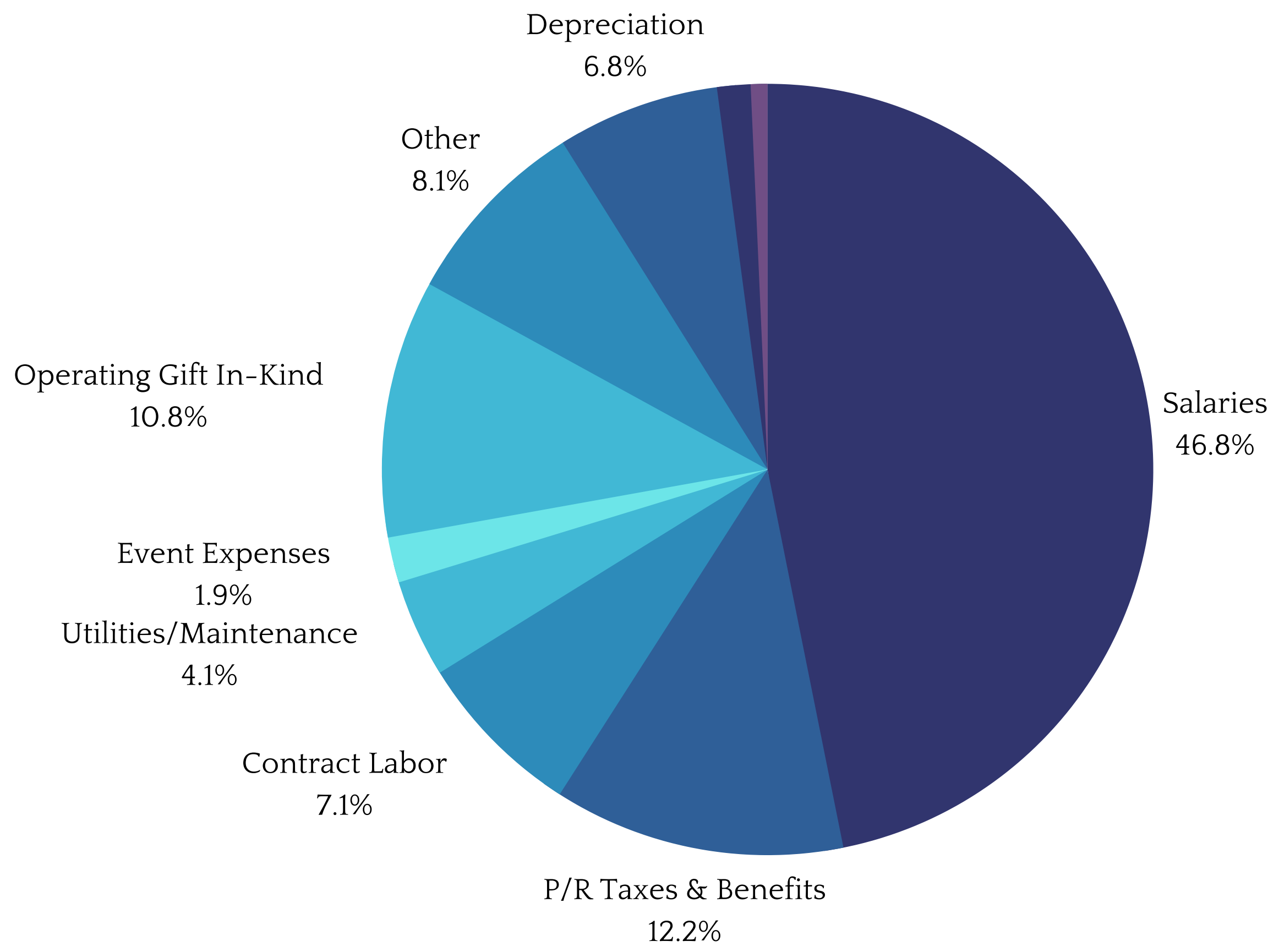
REVENUES

Contributions	489,505	26.9%
Special Events	164,476	9.0%
Private Grants	136,441	7.5%
Government Grants	259,315	14.2%
Program Fees	484,749	26.6%
Archdiocesan Support	118,010	6.5%
Operating Gift In-Kind	167,829	9.2%
Total Revenue	1,820,335	100.0%



EXPENSES

Salaries	728,621	46.8%
P/R Taxes & Benefits	190,512	12.2%
Contract Labor	110,397	7.1%
Utilities/Maintenance	63,590	4.1%
Event Expenses	30,080	1.9%
Mission Write Offs	10,539	0.7%
Other	126,592	8.1%
Depreciation	106,013	6.8%
Birth Mother/Legal	21,821	1.4%
Operating Gift In-Kind	167,839	10.8%
Total Expense	1,556,004	100.0%
Net Profit (Loss)	264,331	



ADVISORY COUNCIL

Ken Johnson, President Derrick Wilson, Vice President

Alan Akin, Treasurer Brenda Byrne, Secretary

Tonja Aaron-Wells Fran Brown Amy Burnette Mary Beth Camp Dr. Sharyn Cortés-Cabello

Anne Cristiani Patrick Daily Greg Ernstberger Emmett Exum Brenda Falkenstein

Kim Fancher Dr. Melissa Fry Tom Gettelfinger Brenda Harris Marcella Hawk Joan Hurley

Charlotte Ipsan Phil Kruer Amy Lorenz Staci Marshall Leaha McCrite Jennifer O'Neil

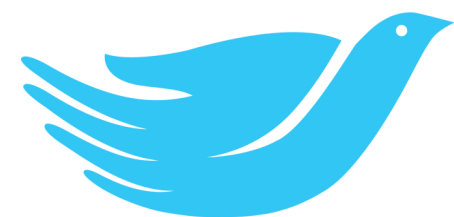
Teresa Pfau Amber Ruoff Betty Russo Kortney Ryan Karen Schueler Andrew Takami

Tex Very Janine Wells Pam Wright Jennifer Yennes-Vizhnay

EX-OFFICIO

Fr. Jeremy Gries, Holy Family Catholic Church

David Bethuram, Executive Director, Secretariat for Catholic Charities



St. Elizabeth Catholic Charities

Providing Help. Creating Hope. Serving All.

OUR STAFF

Mark Casper, Agency Director

Erin Goodlett, Social Services Director

Dawn Bennett, Development Director

Karen Gutman, Controller

Cathy Reid, Administrative Services Director

Nicole Cardwell, Communications Specialist

Julie Barkley, Adoption Bridges of Kentuckiana Program Director

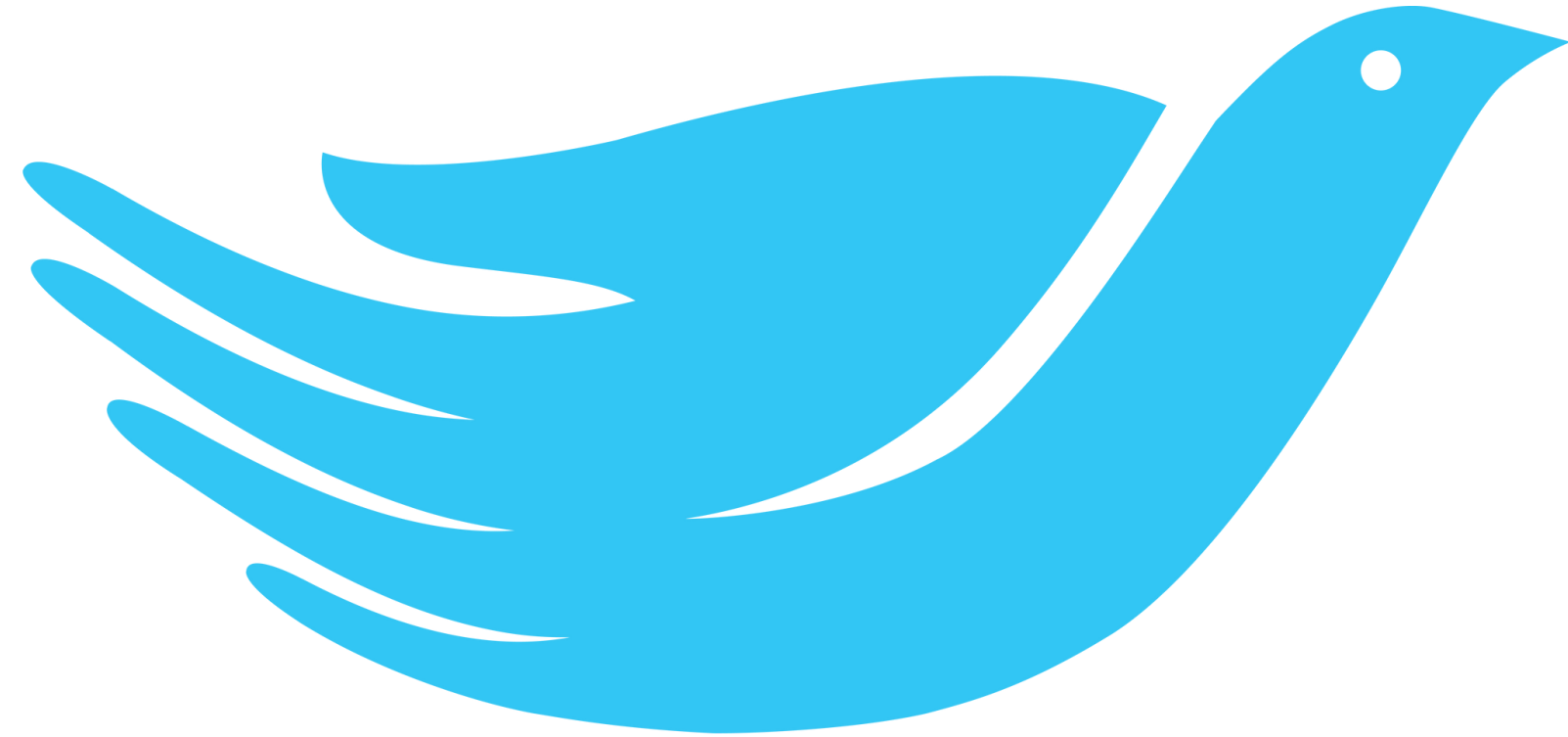
Tricia Byrd, Residential Director

Emily Trinkle, Supported Living Program Director



St. Elizabeth Catholic Charities

Providing Help. Creating Hope. Serving All.



St. Elizabeth Catholic Charities

Providing Help. Creating Hope. Serving All.

702 E Market Street
New Albany, IN 47150

Tel: 812.949.7305

www.stecharities.org

